

Drain: TIMBER HEIGHTS **Drain #:** 222
Improvement/Arm: WINDEN FOND - SECTION 2
Operator: JDM **Date:** 7-29-04
Drain Classification: Urban/Rural **Year Installed:** 1989

GIS Drain Input Checklist

- Pull Source Documents for Scanning JDM
- Digitize & Attribute Tile Drains N/A
- Digitize & Attribute Storm Drains JDM
- Digitize & Attribute SSD JDM
- Digitize & Attribute Open Ditch JDM
- Stamp Plans JDM
- Sum drain lengths & Validate JDM
- Enter Improvements into Posse JDM
- Enter Drain Age into Posse _____
- Sum drain length for Watershed in Posse _____
- Check Database entries for errors JDM

**Gasb 34 Footages for Historical Cost
Drain Length Log**

Drain-Improvement: TIMBER HEIGHTS DRAIN - WALDEN POND - SECTION 2

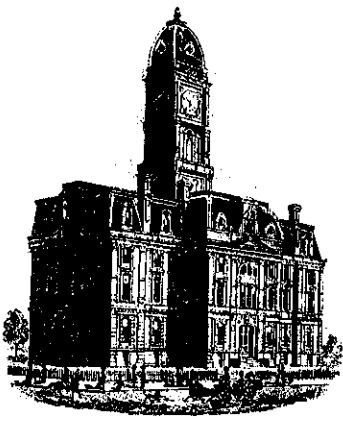
Drain Type:	Size:	Length <i>Swallow ARMED</i>	Length (DB Query)	Length Reconcile	If Applicable	
					Price:	Cost:
SSP	6"	1,005'	1,005'	Ø		
RCP	12"	1,296'	1,296'	Ø		
	15"	484.5	424.5	-60'		
	18"	251'	251'	Ø		
	21"	469'	679'	+205'		
	24"	110.5'	130.5'	+20'		
	30"	372'	352'	-20'		
	36"	Ø	Ø	Ø		
CMP	15"	96'	96'	Ø		
O PITCH		15'	15'	Ø		

Sum: 4,099' 4,244' +145'

Final Report: _____

Comments:

SR AND AD DISABERE ON 15", 21", 24", AND 30" RCP LENGTH



SURVEYOR'S OFFICE

Hamilton County

Kenton C. Ward, Surveyor

~~773-6110 Ext. 19~~
776-9626

Noblesville, Ind. 46060 April 10, 198⁸

TO: Hamilton County Drainage Board

RE: Timber Heights Drain-Walden Pond Section 2 Arm

Attached is a petition, non-enforcement request, plans, calculations, estimate, and assessment roll for the Timber Heights Drain-Walden Pond Section 2 Arm.

I have reviewed the submittals and petition and have found each to be in proper form.

I have made a personal inspection of the land described in the petition. Upon doing so, I believe that the drain is practicable; will improve the public health; benefit a public highway and be of public utility; and that the cost, damages and expenses of the proposed drain will probably be less than the benefits accruing to the owners of land likely to be benefitted. The drain will consists of the following:

✓ 6" SSD	930 L.F.	✓ 15" RCP	492 L.F.	30" RCP	372 L.F.
✓ 15" CMP	60 L.F.	✓ 18" RCP	259 L.F.	✓ 36" RCP	355 L.F.
✓ Open Ditch	15 L.F.	✓ 21" RCP	330 L.F.		
✓ 12" RCP	1183 L.F.	✓ 24" RCP	126 L.F.		

The total length of the drain will be 4122 L.F..

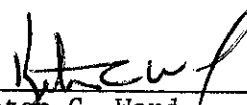
The maintenance of the lakes will be the responsibility of the Homeowners Associations. The regulated will end and begin at the lake inlets and outlets. The SSD under the streets will not be part of the regulated drain.

I have reviewed the plans and believe the drain will benefit each lot equally. Therefore, I recommend each lot be assessed equally. I recommend a maintenance assessment of \$30.00 per lot or tract, \$5.00 per acre for roadways. With this assessment the total annual assessment for the drain/this section will be ~~\$2028.75~~
2118.75

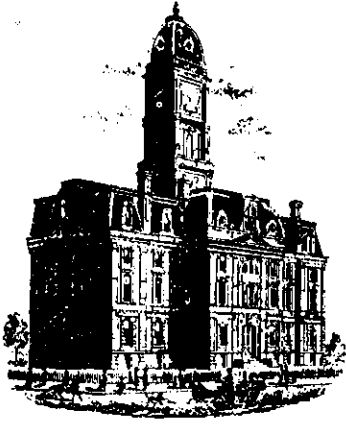
The following SSD will be considered part of the regulated drain; rear Lots 102,102 and 104 from STR 9; rear Lots 7 to 10 from STR 42; rear lots 12,15 to 19 which enters lake; and rear of lots 2 to 6 from STR 47. The lengths involved with this section are those between the following structures: 55,56 and 57; 52A, 52, 50 34, 35, 36, 26, 264,24 and 25; 7,7A,4; 31A,31,30; 53,54; 42, 41,40,39,38,37, 38A,27,28,29,29A;32,32A,33 and 20,21,22,23; also included are the existing 15" CMPs under 99th Street at Hodges Drive. The 15" L.F. of open ditch is from STR 22 to the West line of Holiday Hills and Dales.

I recommend a hearing be set for July 1988.

KCW/no



Kenton C. Ward
Hamilton County Surveyor



SURVEYOR'S OFFICE
Hamilton County

Kenton C. Ward, Surveyor

Phone (317) 776-8495

Fax (317) 776-9628

Suite 146

One Hamilton County Square

Noblesville, Indiana 46060-2230

To: Hamilton County Drainage Board

Re: **Timber Heights Drain - Walden Pond
Sec. 2 Arm**

Attached are as-builts and other information for Walden Pond Sec. 2. An inspection of the drainage facilities for this section has been made and the facilities were found to be complete and acceptable.

During construction, changes were made to the drain which will alter the plans submitted with my report for this drain dated April 10, 1988. The changes are as follows: The 15" CMP under 99th St. and Hodges Dr. were measured to total 96' feet in length.

- Str. 4-7 18" RCP was shortened from 226' feet to 224' feet.
- Str. 7-7A 21" RCP was shortened from 330' feet to 328' feet.
- Str. 22-21 12" RCP was shortened from 193' feet to 192' feet.
- Str. 31-31A 12" RCP was shortened from 161' feet to 158' feet.
- Str. 33-32 21" RCP was shortened from 205' feet to 201' feet.
- Str. 32-32A 21" was shortened from 150' feet to 145' feet. These two structures were originally reported as one pipe segment consisting of 36" RCP at 355' feet.
- Str. 36-34 12" RCP was lengthened from 34' feet to 36' feet.
- Str. 35-34 12" RCP was lengthened from 40' feet to 43' feet.
- Str. 42A-42 consists of 79' feet of 12" RCP which was an additional structure.
- Str. 42-41 12" RCP which was shortened from 125' feet to 120' feet.
- Str. 41-40 12" RCP which was shortened from 117' feet to 113' feet.
- Str. 39-38 15" RCP which was lengthened from 42' feet to 43' feet.
- Str. 38-38A 18" RCP which was shortened from 33' feet to 27' feet.
- Str. 37-38 12" RCP which was shortened from 42' feet to 41' feet.
- Str. 52A-52 15" RCP which was shortened from 38' feet to ~~35'~~ ^{34.5'} feet.
- Str. 52-50 15" RCP which was lengthened from 171' feet to 174' feet.
- Str. 50-26 24" RCP which was shortened from 126' feet to ~~115'~~ ^{114.5'} feet.
- Str. 26-26A 24" RCP which was shortened from 20' feet to 16' feet.

Str. 29-29A 15" RCP which was shortened from 151' feet to 143' feet.

Str. 56-57 consists of 25' feet of 12" RCP.

Str. 55-ES consists of 18' feet of 12" RCP.

The corrected total of 6" SSD is 1005' feet.

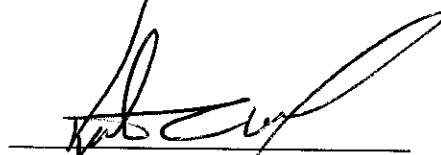
The length of the drain due to the changes described above is now **4,245 feet**.

The non-enforcement was approved by the Board at its meeting on July 24, 1989 and recorded under instrument #8915666.

The bond or letter of credit from Union State Bank, number 3026, dated April 24, 1988, in the amount of \$175,000.00, has been recommended for release in a letter to the Commissioners dated February 20, 1991.

I recommend the Board approve the drains construction as complete and acceptable.

Sincerely,

A handwritten signature in black ink, appearing to read 'Kenton C. Ward', written over a horizontal line.

Kenton C. Ward,
Hamilton County Surveyor

KCW/slm

Asbuilt Structures

Project: WALDEN POND SEC 2

Structure: T.C.: I.E.: Pipe: Length: Original Plans: Difference:

STR 4	808.86	799.75				
STR 7	796.56	791.86	18"	224'	FRM 226'	-2
STR 7	796.56	791.91				
STR 7A	-	789.50	21"	328'	FRM 330'	-2
STR 22	783.0	779.59				
STR 21	786.1	779.89	30"	149'		
STR 21	786.1	779.89				
STR 20	786.3	780.04	30"	73'		
STR 20	786.3	780.04				
STR 23	-	790.30	30"	130'		
STR 53	-	789.50				
STR 54	-	780.3	12"	53'		
STR 24	784.87	782.06				
STR 25	784.77	782.03	12"	30'		
STR 25	784.77	781.68				
STR 26	784.25	780.75	12"	192'	FRM 193'	-1
STR 30	795.22	792.34				
STR 31	795.23	791.97	12"	30'		

6" SSD Streets:

Total: _____

RCP Pipe Totals:

6" SSD Lots:

Total: _____

Other Drain:

Total Length of Drain: _____

Asbuilt Structures

Project: Walden Pond Sec. 2

Structure: T.C.: I.E.: Pipe: Length: Original Plans: Difference:

STR 31	795.23	791.78				
STR 31A	-	784.50	12"	158	FRM 161'	-3
STR 33	-	784.57				
STR 32	788.31	783.45	21"	201'	36" FRM 205'	-4
STR 32	788.31	783.44			36"	
STR 32A	-	780.60	21"	145'	36" FRM 150'	-5
STR 36	785.97	782.67				
STR 34	785.88	782.53	12"	36'	FRM 34'	-2
STR 35	786.09	782.69				
STR 34	785.88	782.58	12"	43'	FRM 40'	+3
STR 42A	797.72	795.02			NOT ON ORIGINAL	
STR 42	796.42	793.87	12"	79'	PLANS	+79
STR 42	796.42	793.87				
STR 41	798.93	792.03	12"	120'	FRM 125'	-5
STR 41	798.93	792.03				
STR 40	796.35	791.91	12"	113'	FRM 117'	-4
STR 40	796.35	791.91				
STR 39	792.41	788.55	12"	148'		

original chg
355'
360"
RCP

6" SSD Streets:

Total: _____

RCP Pipe Totals:

6" SSD Lots:

Total: _____

Other Drain:

Total Length of Drain: _____

Asbuilt Structures

Project: Walden Pond Sec 2

Structure: T.C.: I.E.: Pipe: Length: Original Plans: Difference:

STR 39	792.41	788.31				
STR 38	792.21	787.38	15"	43'	FRM 42'	+1
STR 38	792.21	786.07				
STR 38A	-	784.48	18"	27'	FRM 33'	-6
STR 37	792.03	788.01				
STR 38	792.21	787.65	12"	41'	FRM 42'	-1
STR 34	785.88	782.62				
STR 50	786.54	781.02	12"	132'		
STR 52A	-	780.78				
STR 52	784.79	780.87	15"	35'	FRM 38'	-3
STR 52	784.79	780.83				
STR 50	786.54	780.44	15"	174'	FRM 171'	+3
STR 50	786.54	780.39				
STR 26	784.25	780.45	24"	115'	FRM 126'	-11
STR 26	784.25	780.33				
STR 26A	-	780.19	24"	16'	FRM 20'	-4
STR 27	784.87	782.43				
STR 28	784.79	782.15	12"	58'		

Additional STR

6" SSD Streets:

Total: _____

6" SSD Lots:

Total: _____

RCP Pipe Totals:

Other Drain:

Total Length of Drain: _____

295
60
505

195
10
505

145
85
155
345

Asbuilt Structures

Project: Walden Pond Sec 2

Structure: T.C.: I.E.: Pipe: Length: Original Plans: Difference:

STR 28	784.77	781.75				
STR 29	784.76	781.76	15"	30'		
STR 29	784.76	781.84				
STR 29A	—	780.73	15"	143'	From 151'	-8
STR 56	?	?				
STR 57	?	?	12"	25'	Field ck - no asbuilts	
STR 55	?	?				
ES	?	?	12"	18'	Field ck - "	"

6" SSD Streets:

Total: 0

6" SSD Lots:

12-20	355'
7-10	305
3-6	345

Total: 1005'

RCP Pipe Totals:

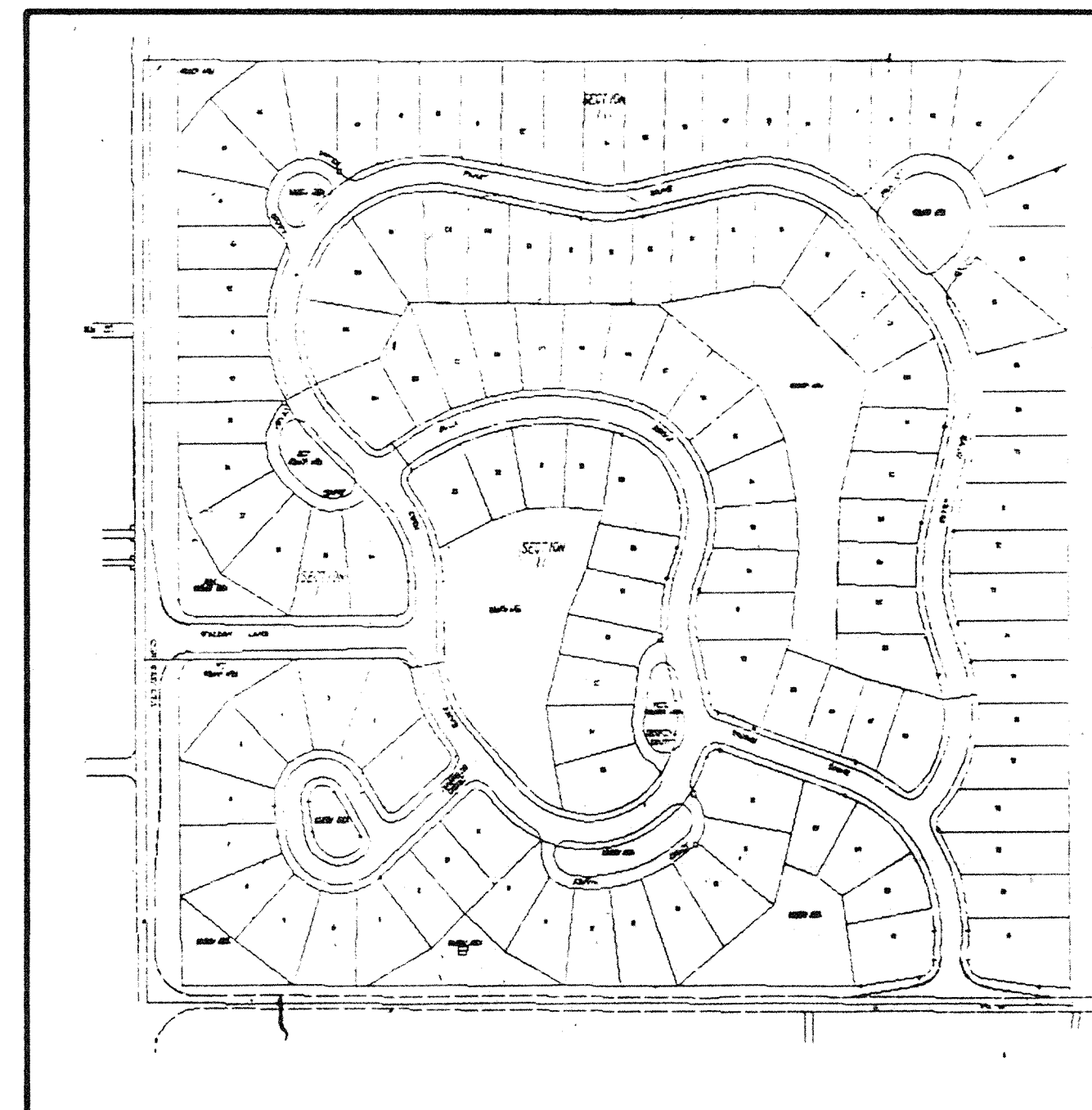
12"	1296
15"	425
18"	251
21"	674
24"	131
30"	352

Other Drain:	
15" CMP	96'
Open Ditch	15'

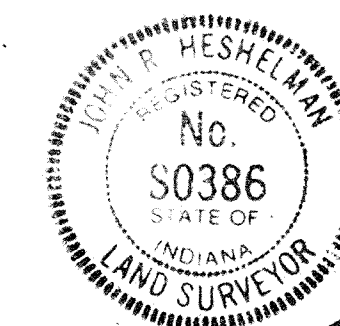
Total Length of Drain: 4,245' Feet

CONSTRUCTION PLANS FOR
WALDEN POND
99th & WESTFIELD BLVD.

INDEX	
SHEET	DESCRIPTION
1	TITLE SHEET
2	AS BUILT DEVELOPMENT PLAN
3-7	PLAN & PROFILE SHEETS
7A	LIFT STATION PLAN 8/1/90



I certify that these drawings represent an as-built survey performed under my supervision and therefore set my hand and seal this 22nd day of July, 1988.



John R. Heselman
John R. Heselman, S0386

THE ESTRIDGE GROUP
148 W. CARMEL DR.
CARMEL, IN

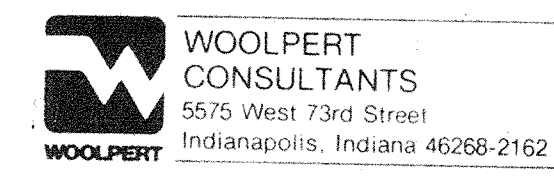
Paul Estridge, Jr.
PAUL ESTRIDGE, JR., EX-V.P.

PLANS PREPARED FOR
ESTRIDGE DEVELOPMENT CO.
148 WEST CARMEL DRIVE
CARMEL, INDIANA 46032

Sanitary and Storm
AS - BUILTS

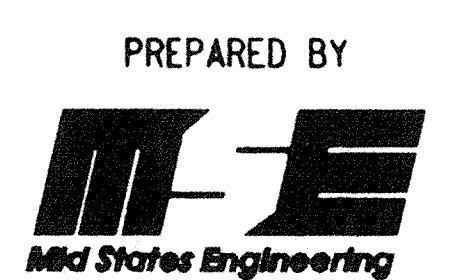
SECTIONS I & II

PREPARED BY:



SHEET 1 OF 7

JOB No. 287-075



HAMILTON COUNTY INDIANA
This information was gathered for input into the Hamilton County Geographical Information System. This document is considered an official record of the GIS.
Entry Date: 7-29-04
Entered by: JDH

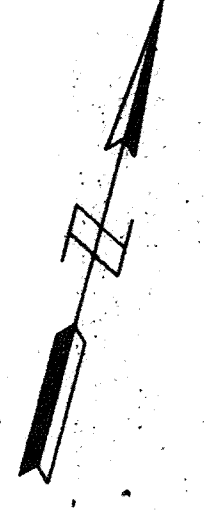
FILED
NOV 14

12, 17, 19, 43, 44, 50-55, 58, 59
23 55 02 47
of 0547 17 2181975111L PPF

FEDERAL ROAD DISTRICT NO.	STATE	PROJECT NO.	FISCAL YEAR	SHEET NO.	TOTAL SHEETS
5	IND.	287-075	87		

Sanitary and Storm AS-BUILTS

SECTION I



NOTES:
LENGTHS OF PIPES INDICATED ARE FROM CENTER TO CENTER OF STRUCTURES AND ARE NOT ACTUAL PIPE LENGTHS.

20 MPH DESIGN SPEED

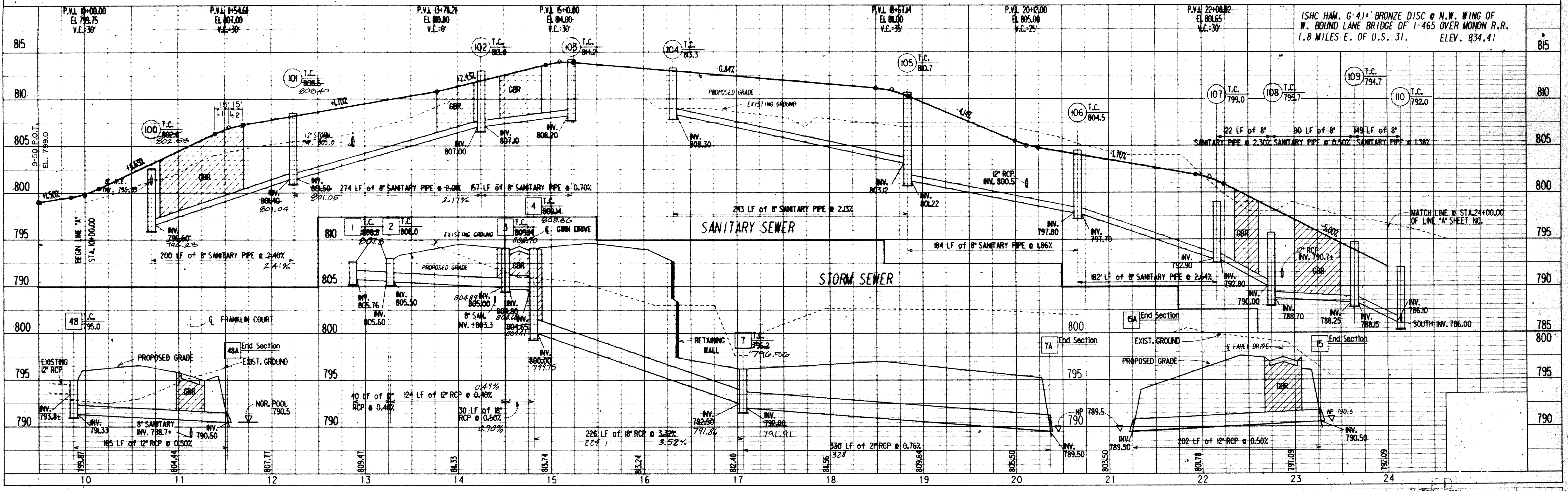
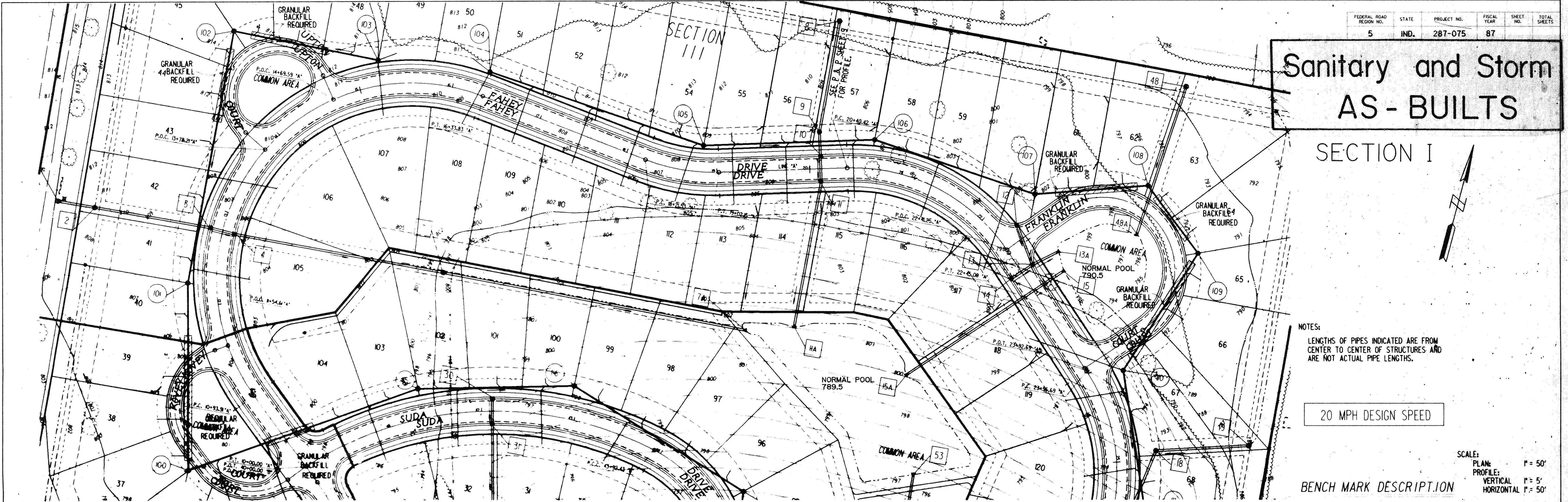
SCALE:
PLAN: 1" = 50'
PROFILE: 1" = 5'
HORIZONTAL: 1" = 50'

BENCH MARK DESCRIPTION

15HC HAM. G-41' BRONZE DISC @ N.W. WING OF W. BOUND LANE BRIDGE OF I-465 OVER MONON R.R. 1.8 MILES E. OF U.S. 31. ELEV. 834.41

PLAN
DATE: _____ BY: _____
SURVEYED: _____ PLOTTED: _____
NOTE BOOK NO.: _____
ALIGNED: _____
CHECKED: _____
DATE: _____

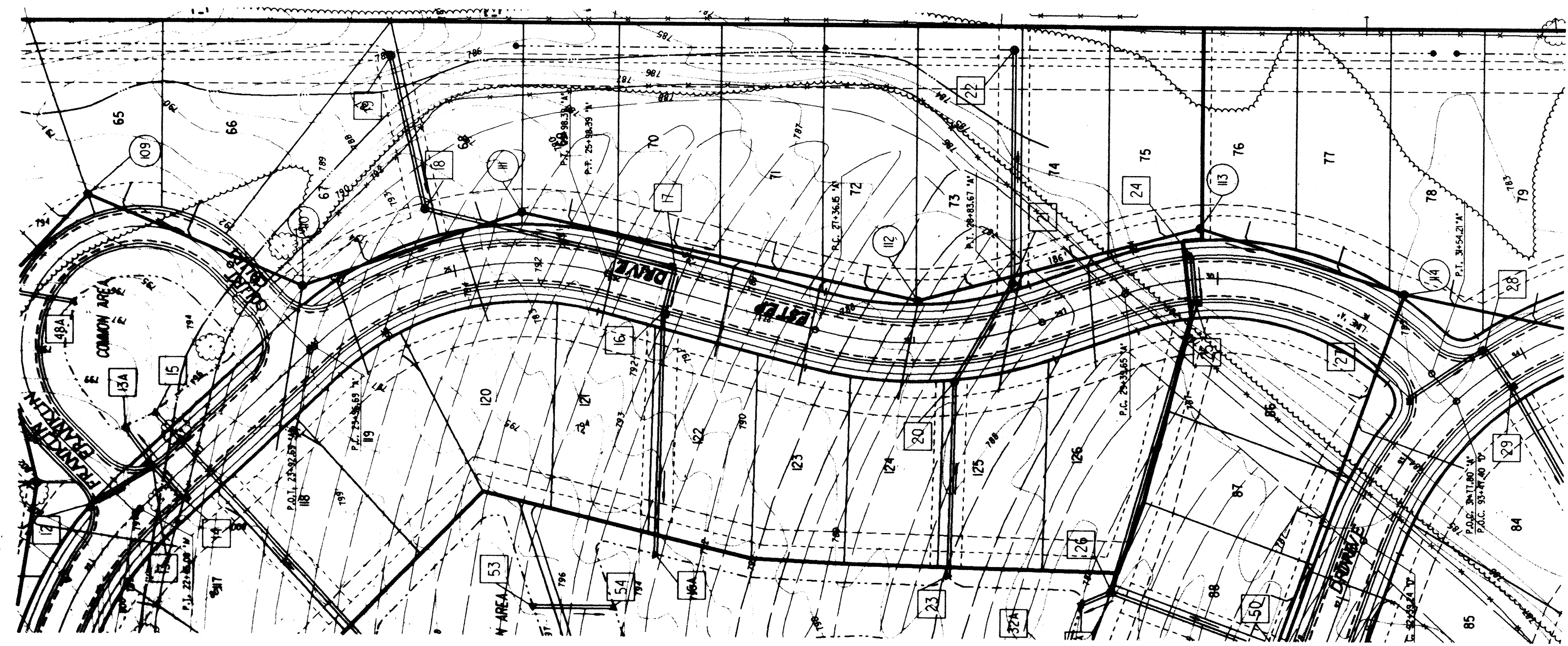
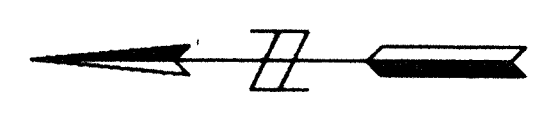
PROFILE
DATE: _____ BY: _____
SURVEYED: _____ PLOTTED: _____
NOTE BOOK NO.: _____
ALIGNED: _____
CHECKED: _____
DATE: _____



FAHEY DRIVE

REVISED WALDEN POND

PROJECT NO.	LINE NO.	TOTAL SHEETS	DSN	DRP
287-075	NOV 17	7	RT0TSPPA	RT0TSPPA



Sanitary and Storm AS-BUILTS

SECTION I

SCALE:
 PLAN: 1" = 50'
 PROFILE: 1" = 5'
 VERTICAL: 1" = 5'
 HORIZONTAL: 1" = 50'

20 MPH DESIGN SPEED

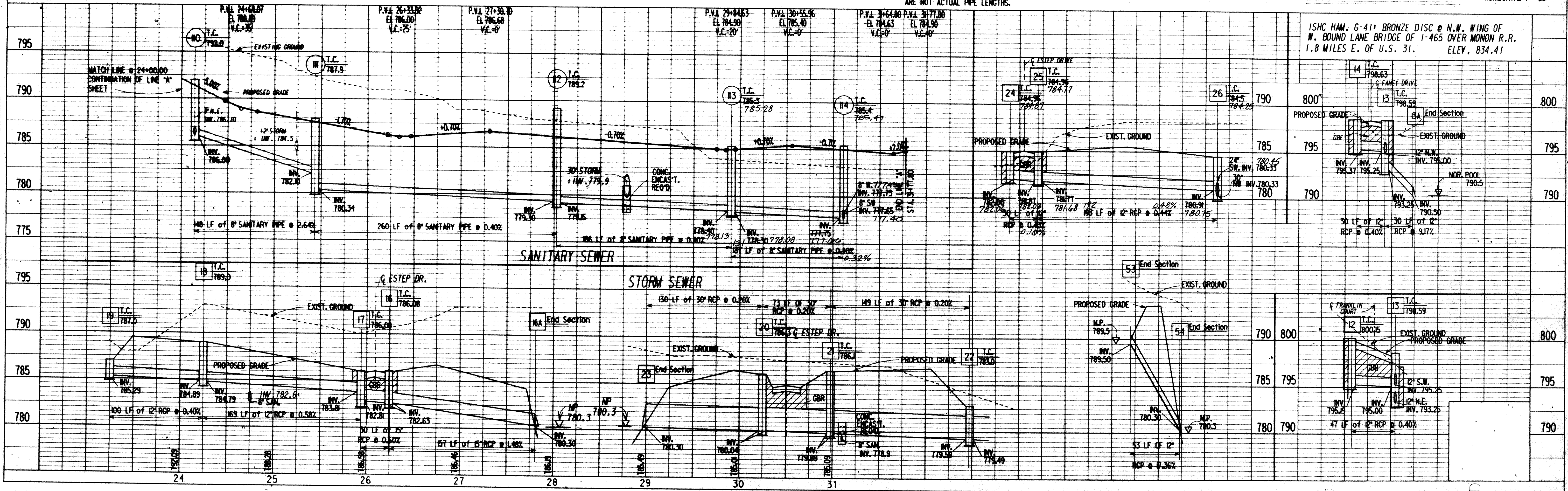
NOTES:
 LENGTHS OF PIPES INDICATED ARE FROM CENTER TO CENTER OF STRUCTURES AND ARE NOT ACTUAL PIPE LENGTHS.

BENCH MARK DESCRIPTION

ISHC HAM. G-41 BRONZE DISC @ N.W. WING OF W. BOUND LANE BRIDGE OF I-465 OVER MONON R.R. 1.8 MILES E. OF U.S. 31. ELEV. 834.41

PLAN
 SURVEYED
 PLOTTED
 NOTE BOOK
 NO.

PROFILE
 SURVEYED
 GRADES CHECKED
 NOTE BOOK
 NO.



ESTEP DRIVE

REVISED WALDEN POND

PROJECT NO.	LINE	SHEET NO.	TOTAL SHEETS	DATE	PREPARED BY	CHECKED BY
287-075	A	4	7		RT105PPA	RT105PPA

FEDERAL ROAD REGION NO.	STATE	PROJECT NO.	FISCAL YEAR	SHEET NO.	TOTAL SHEETS
5	IND.	287-075			

Sanitary and Storm AS-BUILTS

SECTION I

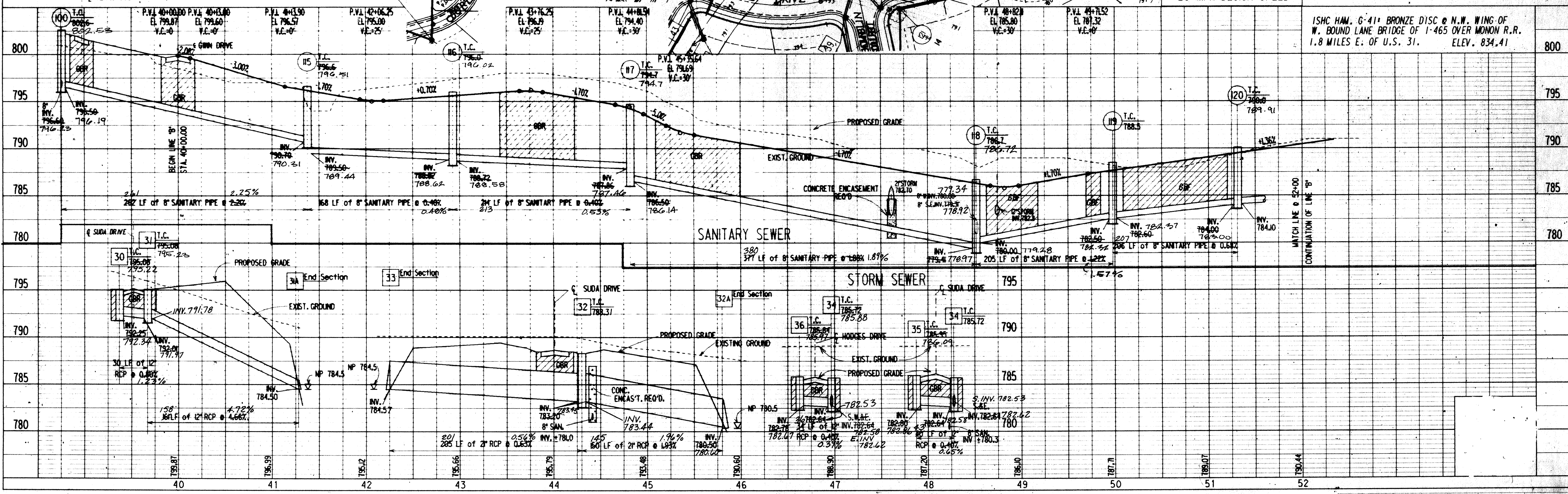


NOTES:
LENGTHS OF PIPES INDICATED ARE FROM CENTER TO CENTER OF STRUCTURES AND ARE NOT ACTUAL PIPE LENGTHS.

SCALE:
PLAN: 1" = 50'
PROFILE: 1" = 5'
VERTICAL: 1" = 50'
HORIZONTAL: 1" = 50'

20 MPH DESIGN SPEED BENCH MARK DESCRIPTION

ISHC HAM. G-41" BRONZE DISC @ N.W. WING OF W. BOUND LANE BRIDGE OF I-465 OVER MONON R.R. 1.8 MILES E. OF U.S. 31. ELEV. 834.41

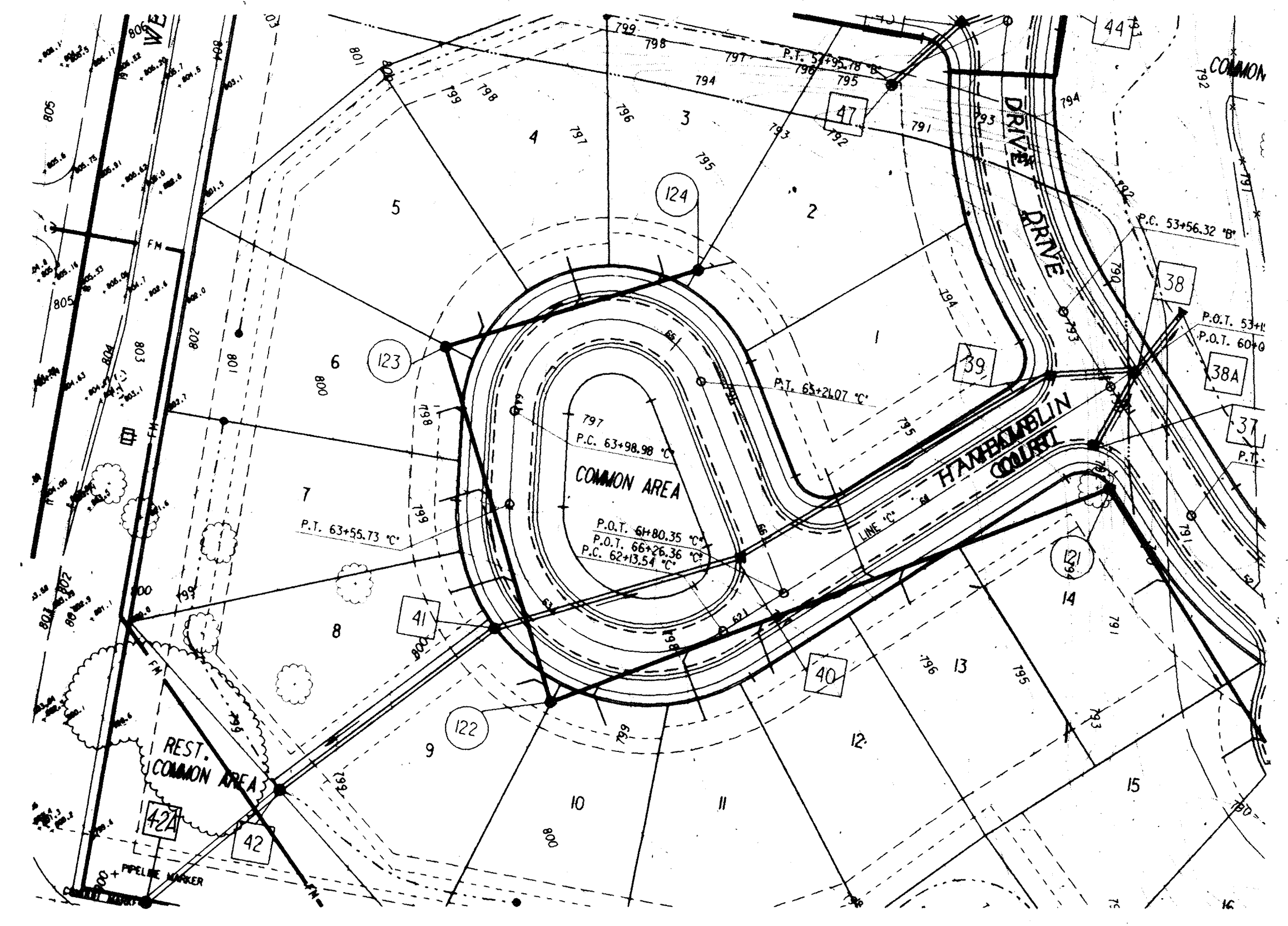
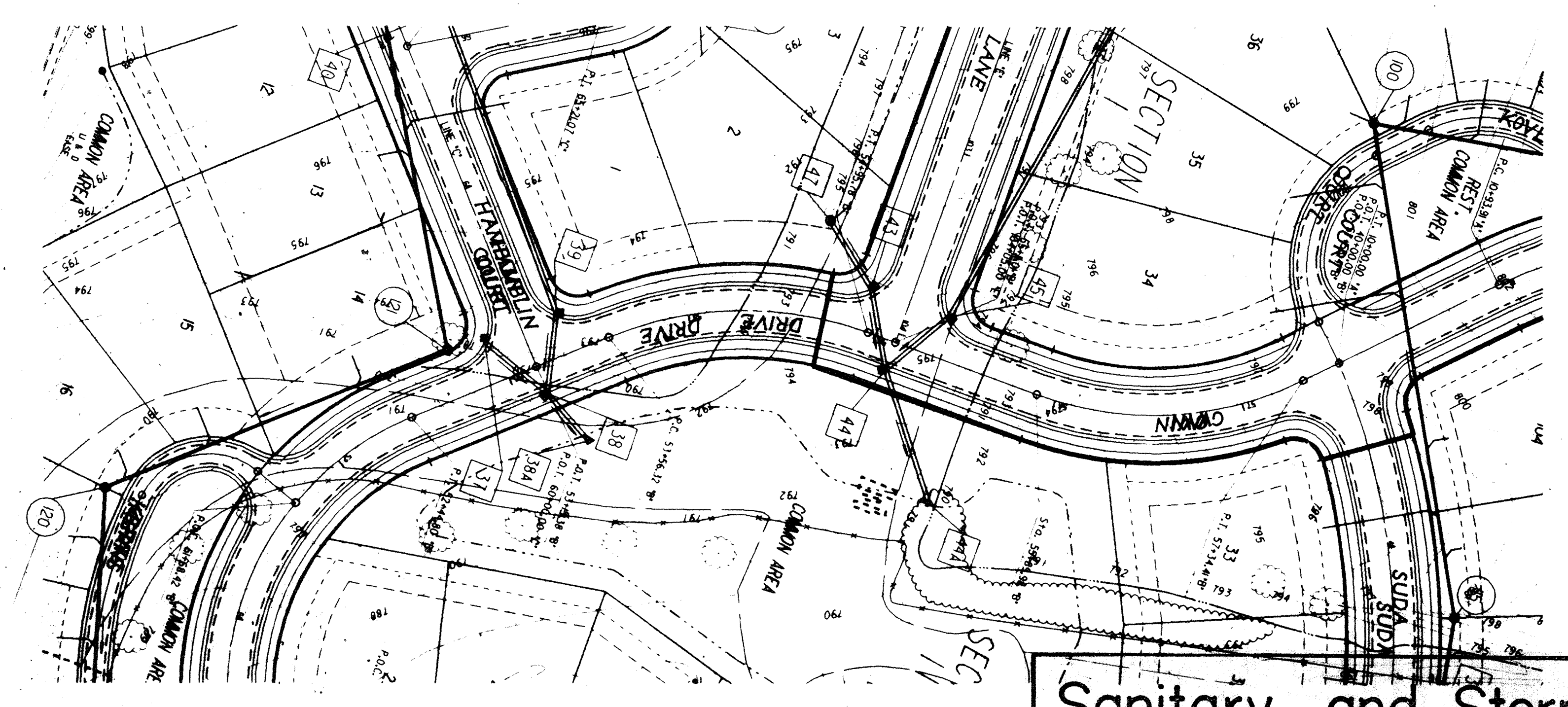


SUDA DRIVE

REVISED WALDEN POND

PROJECT NO.	LINE	SHEET NO.	TOTAL SHEETS	FILED	DATE	BY
287-075	B	5	7	RT075PPB	NOV-14	RT075PPB

PLAN SURVEYED PLOTTED
 NOTE BOOK ALIGNED CHECKED
 NO. DATE BY



Sanitary and Storm AS-BUILTS

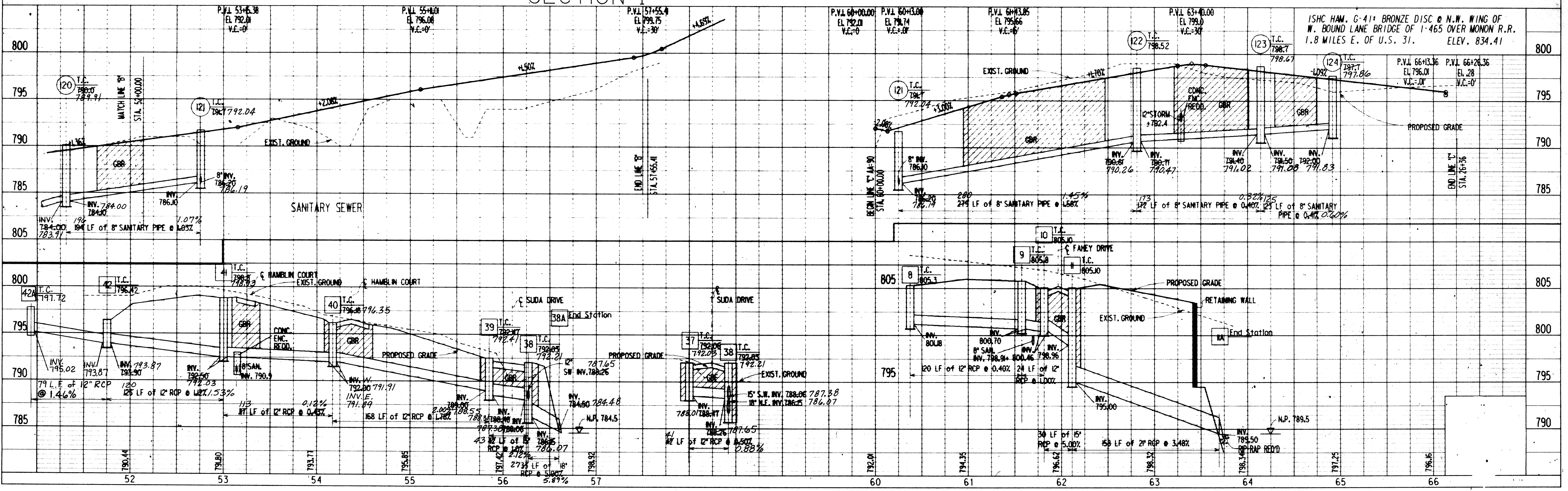
20 MPH DESIGN SPEED

NOTES:
 LENGTHS OF PIPES INDICATED ARE FROM CENTER TO CENTER OF STRUCTURES AND ARE NOT ACTUAL PIPE LENGTHS.

BENCH MARK DESCRIPTION

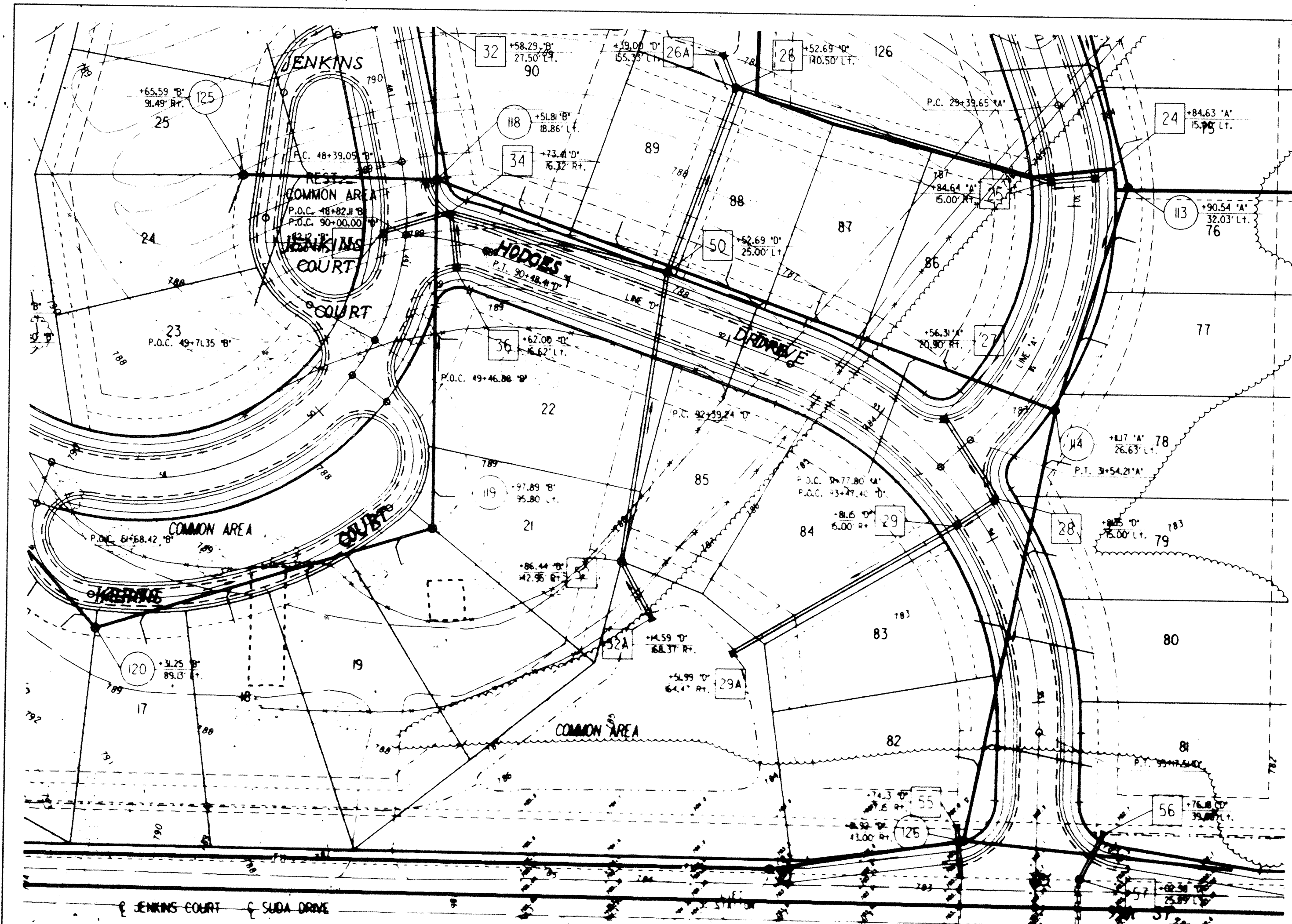
SCALE:
 PLAN: 1" = 50'
 PROFILE: 1" = 5'
 VERTICAL: 1" = 5'
 HORIZONTAL: 1" = 50'

PROFILE SURVEYED PLOTTED
 NOTE BOOK GRADES CHECKED
 NO. DATE BY



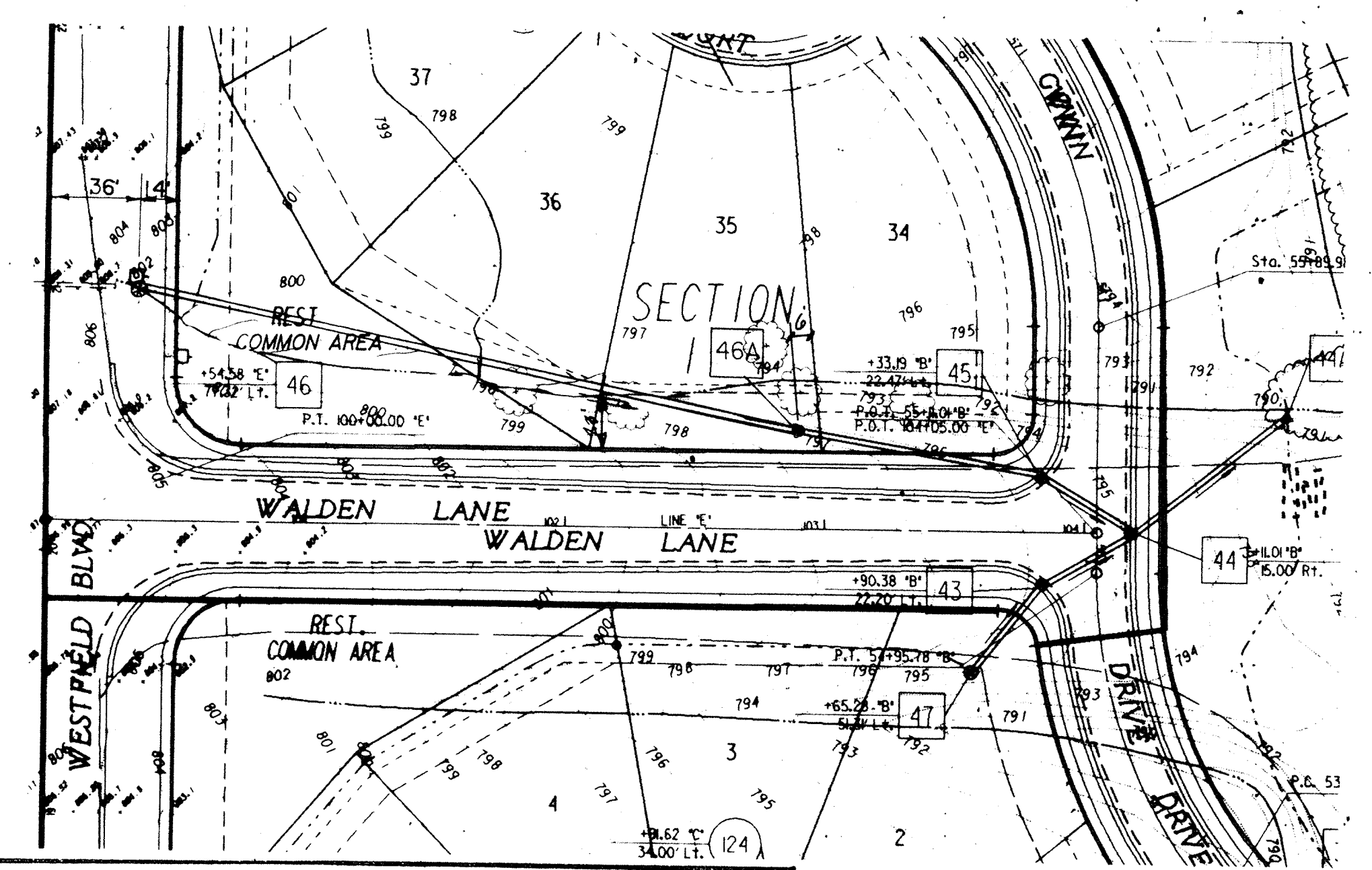
REVISED WALDEN POND

PLAN SURVEYED, PLOTTED, NOTE BOOK, ALIGNMENT CHECKED, NO. OF WAY CHECKED



NOTES:
LENGTHS OF PIPES INDICATED ARE FROM CENTER TO CENTER OF STRUCTURES AND ARE NOT ACTUAL PIPE LENGTHS.

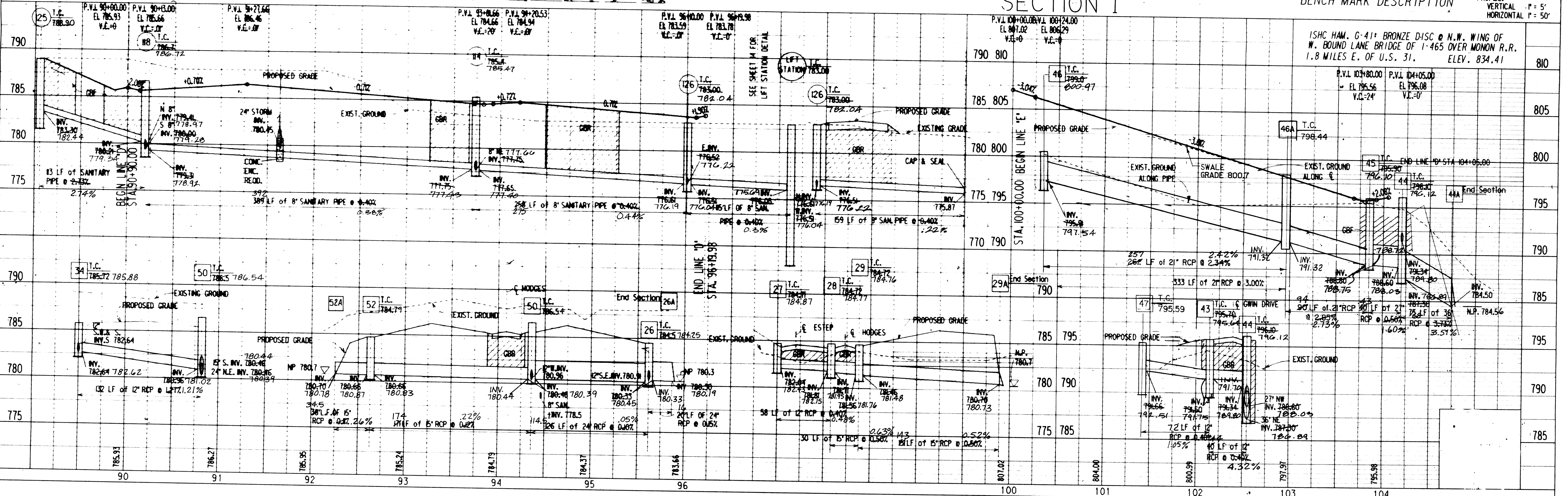
20 MPH DESIGN SPEED



Sanitary and Storm AS-BUILTS

SCALE: PLAN 1" = 50'
PROFILE 1" = 5'
HORIZONTAL 1" = 50'

PROFILE SURVEYED, GRADES CHECKED, NOTE BOOK, B.M.'S NOTED, STRUCTURE NOTATIONS CHECKED

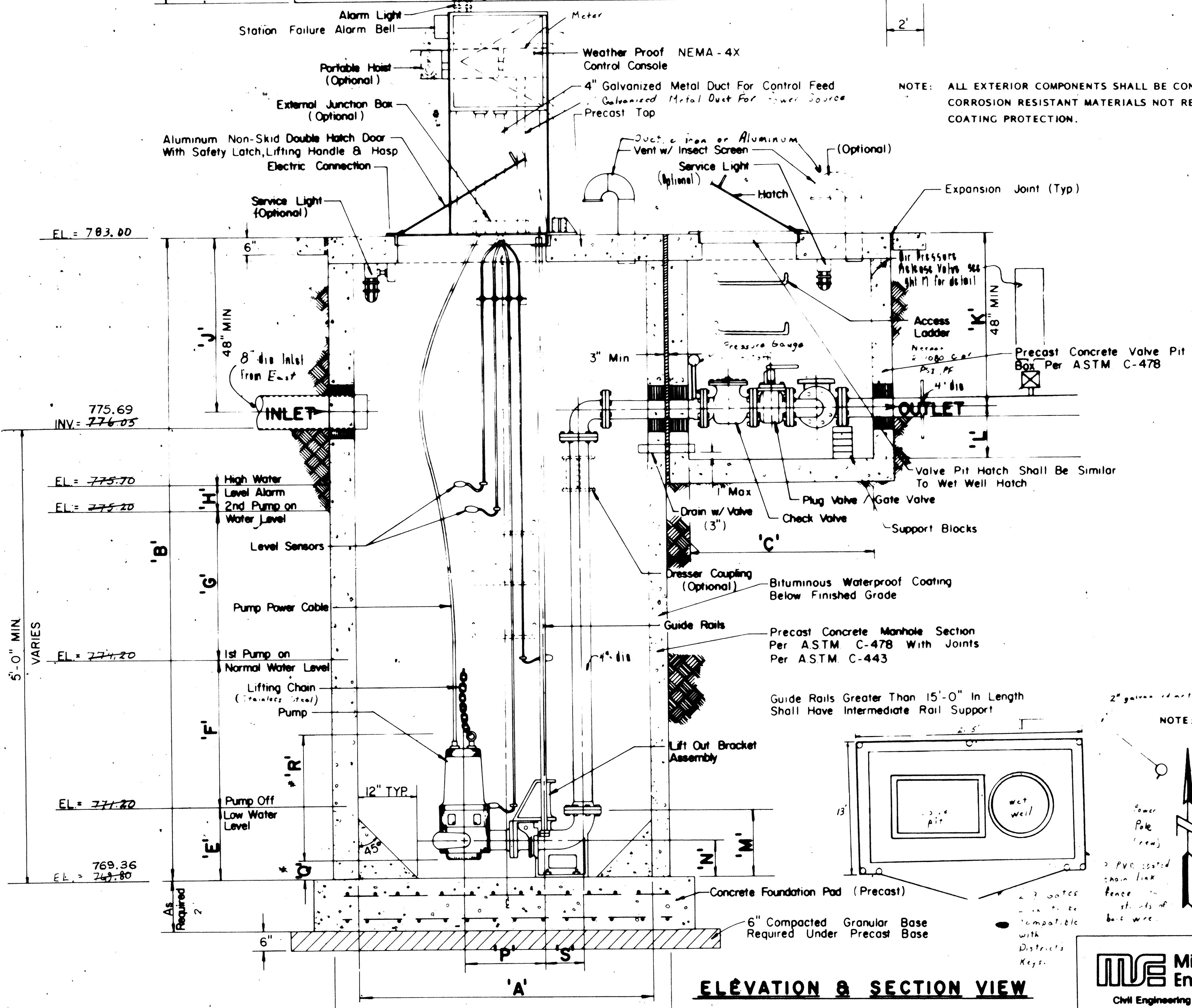
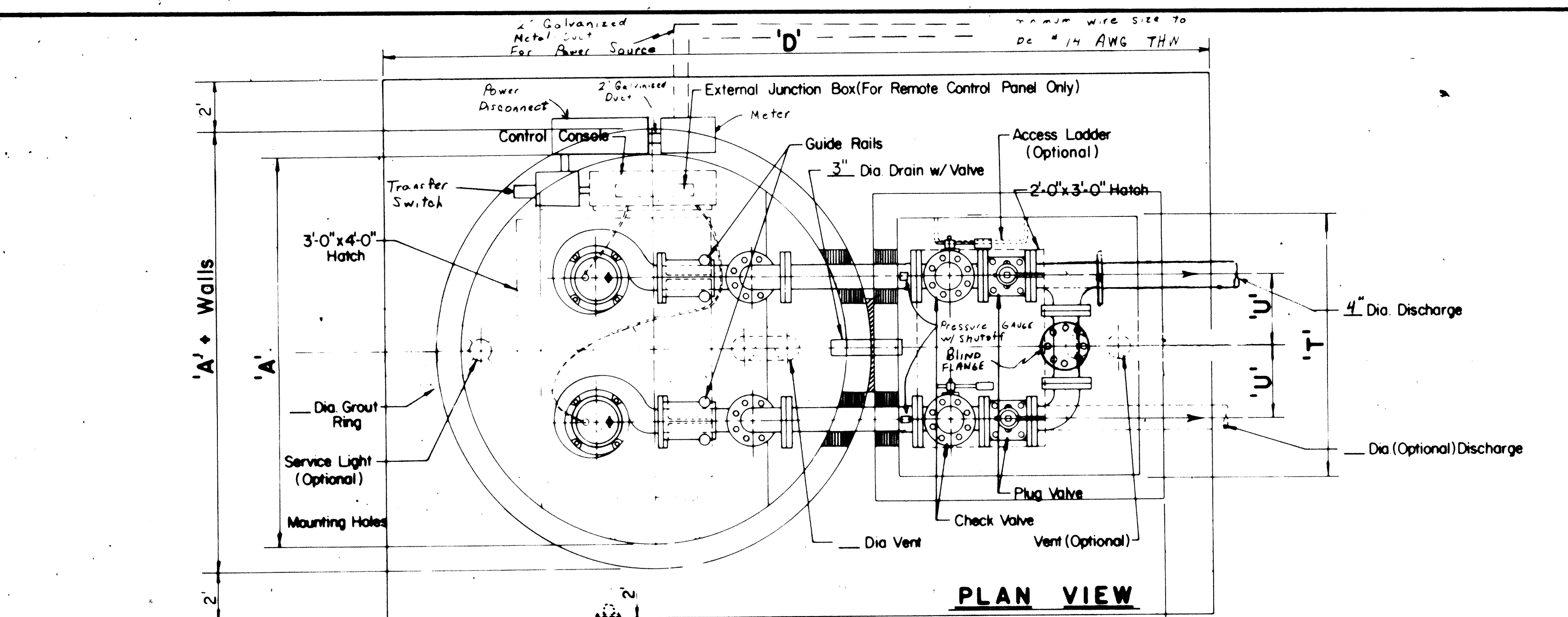


HODGES DRIVE

WALDEN LANE REVISED WALDEN POND

PROJECT NO.	LINE	SHEET NO.	TOTAL SHEETS	DGN	PRF
287-075	D & E	7	7	RT075PPDE	RT075PPDE

NOV 14



STATION MODEL NUMBER	PUMPS MODEL NUMBER	RATE IN G.P.M.	HEAD IN FEET	MOTOR SPECIFICATIONS				DIMENSIONS											
				H.P.	R.P.M.	VOLTS	PHASE	A	B	C	D	E	F	G	H	J			
OR EQUAL		110	40.3	5	1700	230	3	5.5'	13.2'	8'	15.84'	1.4'	3.0'	1.0'	0.5'	6.62'			
K	L	M	N	P	Q	R	S	T	U	V	W	X	Y	Z	Efficiency Impeller				
5.83'	1.5'	★	★	★	★	★	★	5' MIN.							45%	Type 432			

★ TO BE FURNISHED BY SUPPLIER

NOT REQUIRED	CONTRACTOR	EQUIPMENT SUPPLIER	QUANTITY
()	()	(✓)	(1)
()	()	(✓)	(1)
()	()	(✓)	(1)
()	()	(✓)	(4)
(✓)	()	()	()
()	(✓)	()	(1)
()	(✓)	()	(1)
()	(✓)	()	()
()	(✓)	()	(1)
()	(✓)	()	(1)
()	(✓)	()	(1)
()	(✓)	()	(1)
()	(✓)	()	(1)
()	(✓)	()	(1)
()	(✓)	()	(1)
()	()	(✓)	(1)
()	()	(✓)	(1)
()	()	(✓)	(1)
()	()	(✓)	(1)
()	()	(✓)	(1)
()	()	(✓)	(1)
()	()	(✓)	(1)
()	()	(✓)	(1)
()	()	(✓)	(1)
()	()	(✓)	(1)
()	()	(✓)	(1)
()	()	(✓)	(1)
()	()	(✓)	(1)
()	()	(✓)	(1)
()	()	(✓)	(1)
()	()	(✓)	(1)
()	()	(✓)	(1)
()	()	(✓)	(1)
()	()	(✓)	(1)
()	()	(✓)	(1)

- COMPONENTS CHECKED TO BE SUPPLIED**
- 4" Flyte STD CP 3102 submersible rail pump assembly rated 110 G.P.M. @ 40.3 ft. TDH, driven by submersible pump motors 5 H.P., 230 volts, 60 Hz., 3 phase, 1700 R.P.M., 1 year manufacturer's warranty.
 - Duplex control console NEMA 4x, 230 volts, 60 Hz., 3 phase, volt control circuit
 - IN ACCORDANCE WITH ILL. TOWNSHIP REGIONAL WASTE DIST.
 - NEMA 4 external electric junction box connection for remote mounted control console.
 - Liquid level controller: Poliquint mercury float switch assembly with hanging bracket - off - lead - lag - alarm.
 - Air bubbler controller.
 - Pump wet well chamber with duplex access cover 36x48"
 - Valve pit chamber with access cover 18x18"
 - Valve pit chamber support angles.
 - 4" pump discharge piping and support through valve pit.
 - dresser couplings.
 - 3" valve chamber drain and valve assembly.
 - gate valves.
 - 4" check valves.
 - 4" plug valves.
 - emergency pump out with valve.
 - Pump chamber 4" vent.
 - Valve chamber 4" vent.
 - 1" pump guide rails. (EACH MOTOR)
 - 24" pump lifting chain.
 - Pump and valve chamber ladder rungs. (85 required)
 - Pump and valve chamber lighting
 - Portable maintenance hoist:
 - Alarm light (red 100W) with hazardous duty cover
 - Audible bell for station failure

NOTE: ALL EXTERIOR COMPONENTS SHALL BE CONSTRUCTED OF CORROSION RESISTANT MATERIALS NOT REQUIRING SURFACE COATING PROTECTION.

NOTE: CONTRACTOR SHALL SUBMIT SHOP DRAWINGS FOR STATION EQUIPMENT, INCLUDING: ELECTRICAL, MECHANICAL PIPING, PUMP INFORMATION, MOTOR INFORMATION (WITH EFFICIENCY AND PERFORMANCE CURVES), FLOATS, CONTROL PANEL, VALVES, AND ALARMS TO THE ENGINEER FOR APPROVAL PRIOR TO ORDERING EQUIPMENT OR CONSTRUCTION.

The lift station's electrical system must be equipped with a three-way transfer switch and a compatible receptacle for operation with the District's portable generator.

An outside duplex receptacle needs to be placed on the control panel.

NOTE: Lift Station Specifications under separate cover.

NOTE: All sewage pipe above the 1st pump on water level in the wet well and valve pit to be painted brown.

4-1-89

"For Information Only Not For Construction"

Mid-States Engineering Co., Inc.
Civil Engineering - Photogrammetry - Surveying
107 North Pennsylvania Street
Indianapolis, Indiana 46204
317-634-6236

Lift Station Plan

DESIGN BY: B.E.H.
DRAWN BY: J.W.L.
CHECKED: []
APPROVED: []

REVISIONS AND DATES

3-1-88 - rev ladder type, add pressure valve, increase valve pit size, add conduit locations, wire size, add fence location.

4-1-88 - rev vent material - add note

DATE: 1-15-86
SCALE: NONE
JOB NO.: 285-131
SHEET NO.: 7A OF 7
TUBE NO.: []